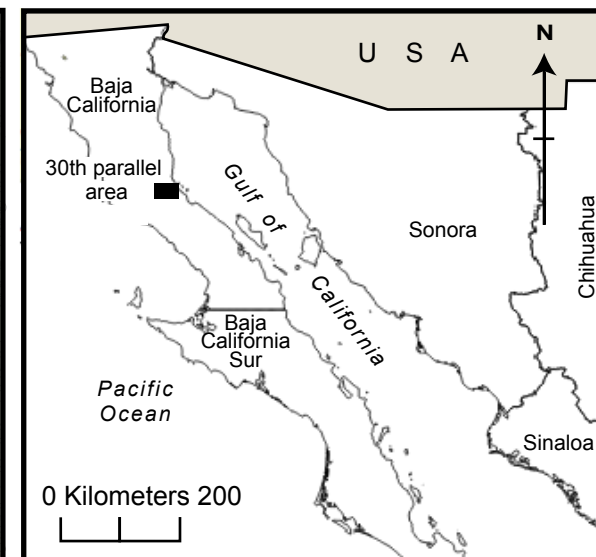
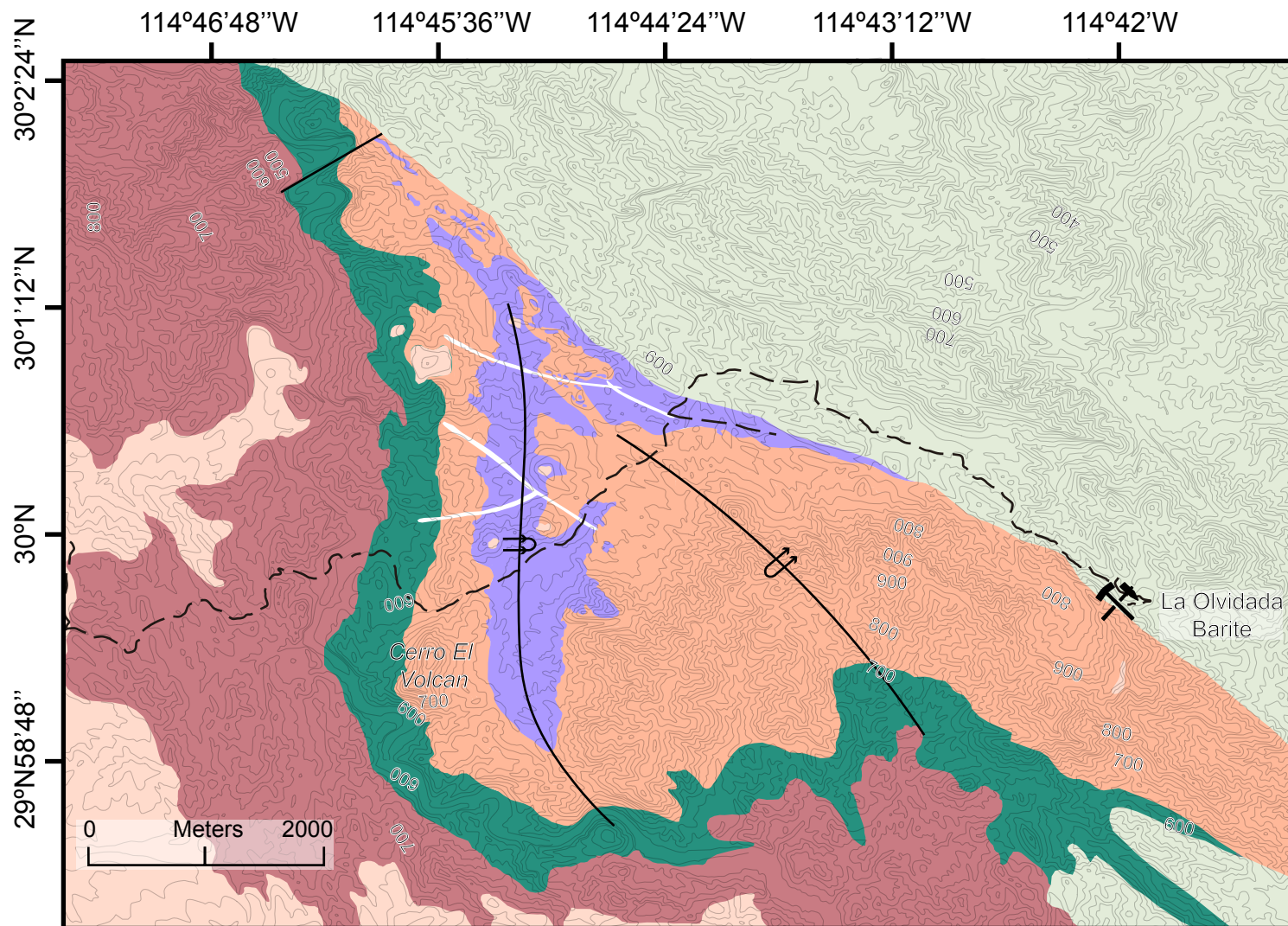


Geologic map of the Arroyo Zamora - Cerro El Volcan, 30th parallel Area (Baja California). Based on Buch and DeLattre (1993)



Legend

- Non-differentiated Tertiary rocks
- Cretaceous batholithic dykes
- Non-differentiated Cretaceous rocks
- El Indio Formation (Triassic)
- El Volcan Formation (Upper Permian)
- El Marmol (Lower Permian)
- Zamora Formation (Paleozoic)
- Dirt Road
- ↖↗ Overturned anticline
- ↖↗ Overturned syncline
- ↖↗ Mine
- Fault